

5E-IRS3600

Automatic Infrared Sulfur Analyzer

Standard Configuration

- Computer
- Printer
- Main analyzer
- A/C adapter
- Anhydron
- Silica wool
- Standard Reference Material(GBW)
- Crucibles
- Outer combustion tube
- Inner combustion tube
- Boat stop
- O-ring kit
- Tool kit



Up to 60 samples per batch automatically

Application

5E-IRS3600 Automatic Infrared Sulfur Analyzer is used to determine the total sulfur content by infrared absorption, which is widely applied in power plants, coal mines, metallurgy, chemical industry, commercial inspection, scientific research, etc.

Features

High Automation

1. Unique dual oxygen lance to increase the combustion efficiency.
2. Maximum throughput with auto-loader, available for 60 samples per batch and easy to add or reduce sample quantity during analysis.
3. Patented sample delivering system realizes smooth work flow of pulling and discharging samples.
4. The sample mass can be automatically sent to the computer by balance connection.
5. Available for unattended operation by intelligent sensor.
6. Auto self-diagnosis and auditory alarm.

Accuracy and Stability

1. Top quality ultra-low drift infrared cell to ensure stability of the testing results.
2. Reliable single Si-C spiral tube heating components.
3. Unique gas tightness structure to avoid the effect of SO₂ in air.

Easy Operation

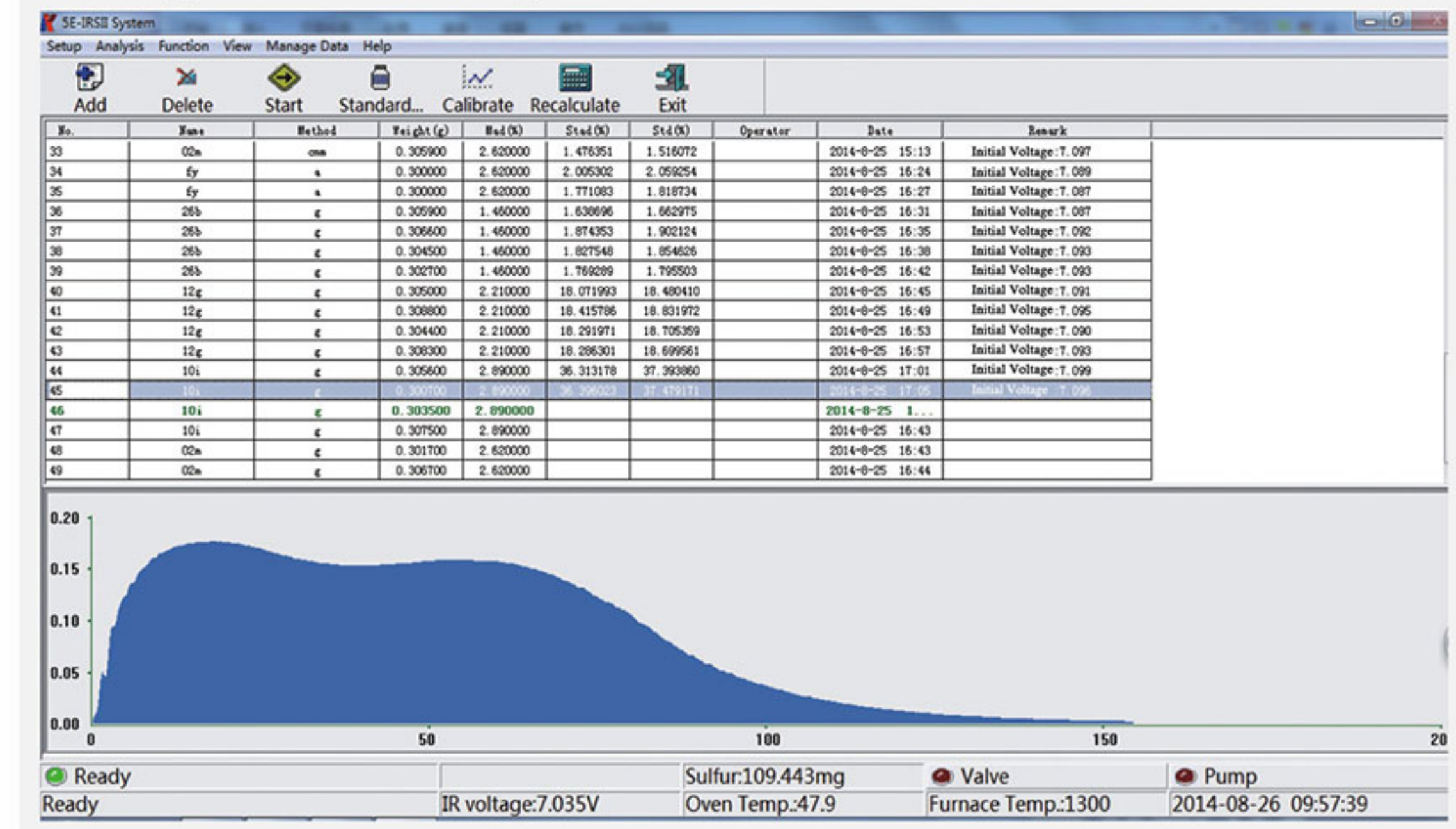
1. Optimized gas circuit to minimize maintenance time.
2. Digital display for gas flow.

Environmental Protection

Exhaust emissions ventilation system to avoid air pollution of laboratory.



Intelligent Software System



Test Data

Sample Name	Sample Weight	Mad(%)	Stad(%)	Std(%)	
Control 6H0160-1	0.3092	5.16	2.482	2.617	(±0.066)
Control 6H0160-2	0.3077	5.16	2.496	2.632	
Average				2.624	
Reference Value				2.625	
ASTM D4239-10 Repeatability Limit(r)				0.099	
ASTM D4239-10 Reproducibility Limit(R)				0.256	
Repeatability				0.015	
Reproducibility				0.001	
Conclusion: 5E-IRSII Infrared Sulfur Analyzer exceeds the ASTM Precision Requirement					

Specification

Model	5E-IRS3600	5E-IRSII
Conforms to Method	ASTM D1552, ASTM D4239, ISO 19579 and GB/T 25214	
Max. Sample Loading	Up to 60 samples per batch automatically	1 sample per batch manually
Analysis Method	Infrared absorption	
Analysis Resolution	0.001%	
Sulfur Range	0.01%-30% customized range available	
Analysis Time per Sample	≤120s	
Analysis Temp	1350°C	
Temp. Control Precision	±1°C	
Sample Mass	200mg-400mg for coal and coke (300mg is recommended)	
Power Supply	Single phase, AC220V±10%, 50/60Hz, ≤4KW	
Net Weight	70kg	60kg
Dimensions(L×W×H)	750mm×650mm×700mm	510mm×700mm×620mm